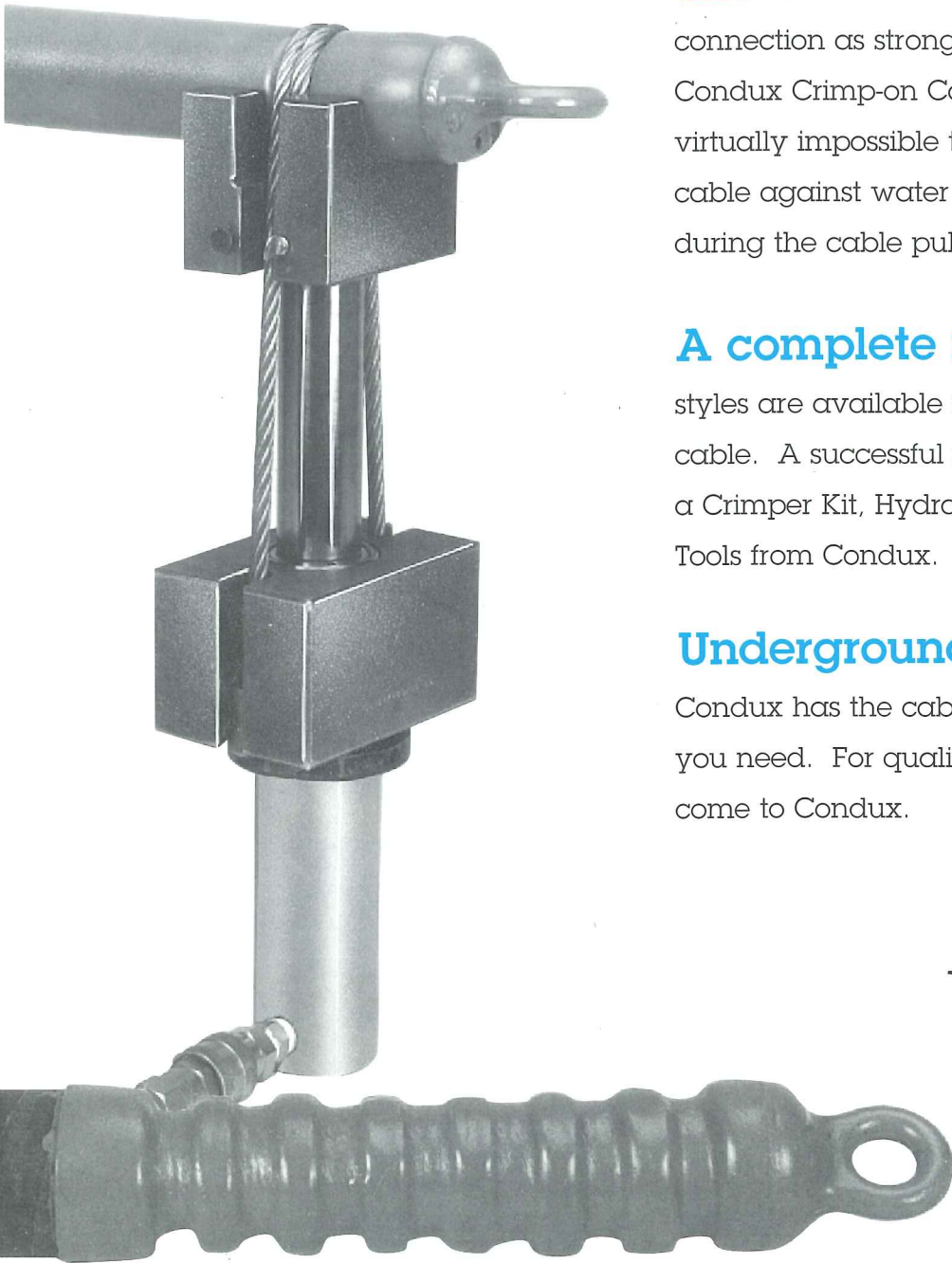


# Crimp-On Pulling Eyes



**The ultimate solution** for a connection as strong as the cable itself. Condux Crimp-on Cable Pulling Eyes are virtually impossible to pull off and seal the cable against water and air contaminants during the cable pull.

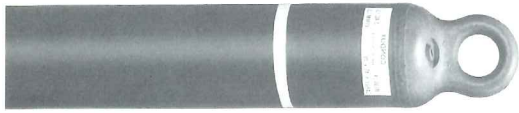
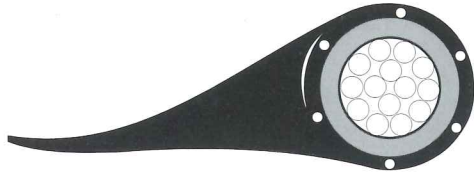
**A complete range** of sizes and styles are available for telephone and power cable. A successful installation is ensured with a Crimper Kit, Hydraulic Pump and Installation Tools from Condux.

**Underground or Overhead.** Condux has the cable installation equipment you need. For quality equipment and tools, come to Condux.

*pulling for you!*



# Crimp-On Power Cable Pulling Eyes



These pulling eyes require no stripping of the semi-conductor or insulation. They are installed directly over the outer jacket of the power cables. When used on single conductors, the pulling eyes form a water tight seal to protect against water and air intrusion. Multiple conductors can be crimped into one eye for ease of cable installation.

Crimp-on Eye for pulling 1, 3 or 4 conductors. Uses standard crimper.

U.S. Patent Number 4,411,409. Patented Canada 1982.

No spikes

**ORDER CAREFULLY**  
This item is made-to-order and is not returnable

## Light Duty Eye    Heavy Duty Eye

Part Number	No. of Crimps	Part Number	No. of Crimps	Inside Diameter		Outside Diameter		Box Qty's
				Inches	mm	Inches	mm	
-	-	08912009	3	.950	24	1.020	26	10
-	-	08912010	3	1.055	27	1 1/4	29	10
08913011	3	08912011	4	1.152	29	1 1/4	32	10
08913012	3	08912012	4	1.277	32	1 3/8	35	10
08913014	3	08912014	4	1.402	36	1 1/2	38	10
08913015	3	08912015	4	1.527	39	1 5/8	42	10
08913016	3	08912016	4	1.652	42	1 3/4	45	10
08913017	3	08912017	4	1.777	45	1 7/8	48	10
-	-	08912018	6	1.777	45	1 7/8	48	10
08913019	4	08912019	6	1.902	49	2	51	10
08913020	4	08912020	6	2.027	51	2 1/8	55	10
08913021	4	08912021	6	2.152	55	2 1/4	58	10
08913022	4	08912022	6	2.277	58	2 3/8	61	10
08913024	4	08912024	6	2.402	61	2 1/2	64	10
08913025	4	08912025	6	2.527	64	2 5/8	68	10
08913026	4	08912026	6	2.652	68	2 3/4	70	10
08913027	4	08912027	6	2.777	70	2 7/8	74	10
08913028	4	08912028	6	2.902	74	3	76	5
08913029	4	08912029	6	2.995	76	3 1/8	79	5
08913031	4	08912031	6	3.140	79	3 1/4	83	5
08913032	4	08912032	6	3.245	83	3 3/8	86	5
08913033	4	08912033	6	3.370	86	3 1/2	89	5
08913034	4	08912034	6	3.495	89	3 5/8	92	5
08913036	4	08912036	6	3.620	92	3 3/4	95	5

To determine the I.D. of pulling eyes for a multiple pull:  
3 conductors = Conductor O.D. x 2.155  
4 conductors = Conductor O.D. x 2.414

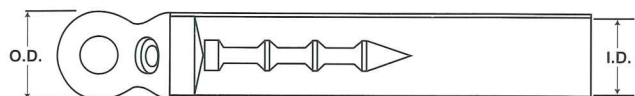
# Crimp-On Power Cable Pulling Eyes For 3 Conductor Paper Lead Cable



Pulls directly on the conductors while sealing around the lead sheath, used for high tension pulls. Uses standard crimper.

Part Number	Inside Diameter		Outside Diameter		Box Qty's
	(in)	(mm)	(in)	(mm)	
08912622	2.277	58	2 3/8	60	10
08912624	2.402	61	2 1/2	64	10
08912625	2.527	64	2 5/8	67	10
08912626	2.652	67	2 3/4	70	10
08912627	2.777	71	2 7/8	73	5
08912630	2.870	73	3	76	5
08912628	2.902	74	3	76	5
08912629	2.995	76	3 1/8	79	5
08912632	3.245	82	3 3/8	86	5
08912634	3.495	89	3 5/8	92	5
08912636	3.620	92	3 3/4	95	5

**ORDER CAREFULLY**  
This item is made-to-order and is not returnable



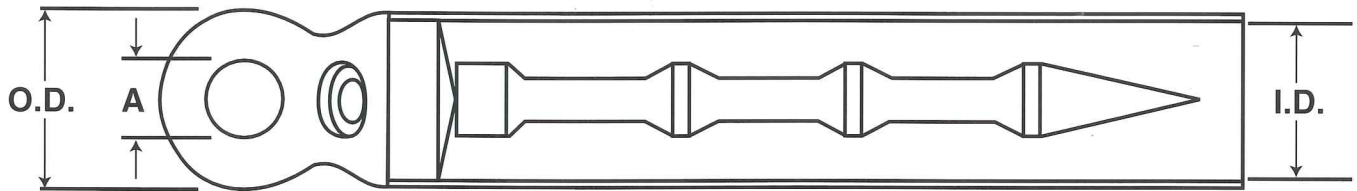
# Crimp-On Telephone Cable Pulling Eyes\*



3 & 4 Crimp Series eyes use standard crimper kit.

- Fast, easy field installation
- Forms a connection as strong as the cable itself
- Uses the entire cable, jacketing and conductor, for pulling
- Reduces the risk of cable deformation during pulling
- Seals the cable end against both water and air intrusion

\*Patented Canada 1978.



## 3 Crimp Series

Part No. W/Pressure Valve Port	Part Number W/O Valve Port
08919709	08911009
08919510	08911010
08919511	08911011
08919512	08911012
08919514	08911014
08919515	08911015
08919516	08911016
08919517	08911017
08919519	08911019
08919520	08911020
08919521	08911021
08919522	08911022
08919524	08911024
08919525	08911025
08919526	08911026
08919527	08911027
08919528	08911028
08919529	08911029
08919531	08911031
08919532	08911032
08919533	08911033
08919534	08911034
08919536	08911036

## 4 Crimp Series

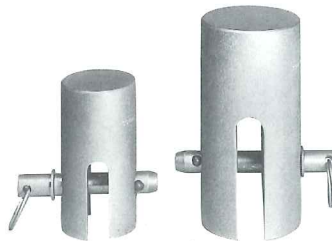
Part No. W/Pressure Valve Port	Part Number W/O Valve Port	Inside Diameter (in) (mm)	Outside Diameter (in) (mm)	A (in) (mm)	Box Qty's
08919009	-	.950 24	1.020 26	1/2 13	10
08919010	-	1.055 27	1.125 29	1/2 13	10
08919011	08910011	1.152 29	1 1/4 32	1/2 13	10
08919012	08910012	1.277 32	1 3/8 35	1/2 13	10
08919014	08910014	1.402 36	1 1/2 38	5/8 16	10
08919015	08910015	1.527 39	1 5/8 42	5/8 16	10
08919016	08910016	1.652 42	1 3/4 45	3/4 19	10
08919017	08910017	1.777 45	1 7/8 48	3/4 19	10
08919019	08910019	1.902 49	2 51	1 25	10
08919020	08910020	2.027 51	2 1/8 55	1 25	10
08919021	08910021	2.152 55	2 1/4 58	1 25	10
08919022	08910022	2.277 58	2 3/8 61	1 25	10
08919024	08910024	2.402 61	2 1/2 64	1 25	10
08919025	08910025	2.527 64	2 5/8 68	1 25	10
08919026	08910026	2.652 68	2 3/4 70	1 1/8 29	10
08919027	08910027	2.777 70	2 7/8 74	1 1/8 29	10
08919028	08910028	2.902 74	3 76	1 1/8 29	5
08919029	08910029	2.995 76	3 1/8 79	1 1/8 29	5
08919031	08910031	3.140 79	3 1/4 83	1 1/8 29	5
08919032	08910032	3.245 83	3 3/8 86	1 1/8 29	5
08919033	08910033	3.370 86	3 1/2 89	1 1/8 29	5
08919034	08910034	3.495 89	3 5/8 92	1 1/8 29	5
08919036	08910036	3.620 92	3 3/4 95	1 1/8 29	5

# Crimp-On Telephone Pulling Eye Accessories

## Driving Tools

Driving tools are used to disperse the force when driving eye on cable. Their use is recommended since applying force to the eye itself may cause breakage.

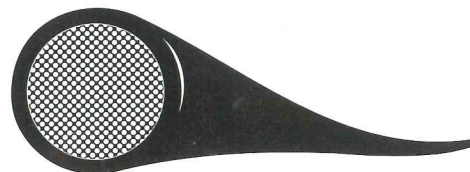
Part Number	Pulling Eye Size		Description
	(in)	(mm)	
08940000	.950-1.277	24-32	1½" (38 mm) w/pin
08940001	1.402-2.527	36-64	2¼" (57 mm) w/pin
08940002	2.652-3.620	67-92	3" (76 mm) w/pin
08940008	-	-	Pin for 1½" (38 mm) tool
08940006	-	-	Pin for 2¼" (57 mm) tool
08940007	-	-	Pin for 3" (76 mm) tool



## Pilot Boring Tools

Assists with centering the pulling eye on the cable by making a pilot bore. To be used only on copper communication cables. Comes equipped with handle.

Part Number	Pulling Eye Size		Description
	(in)	(mm)	
08945011	.950-1.152	24-29	⅜" (9 mm) O.D.
08945015	1.277-1.527	32-39	7/16" (11 mm) O.D.
08945021	1.652-2.152	41-55	9/16" (14 mm) O.D.
08945027	2.277-2.777	58-71	¾" (19 mm) O.D.
08945029	2.902-2.995	74-76	⅞" (22 mm) O.D.
08945034	3.140-3.495	80-89	1" (25 mm) O.D.
08945043	3.620	92	1⅛" (29 mm) O.D.
08906001	-	-	Boring Tool Handle

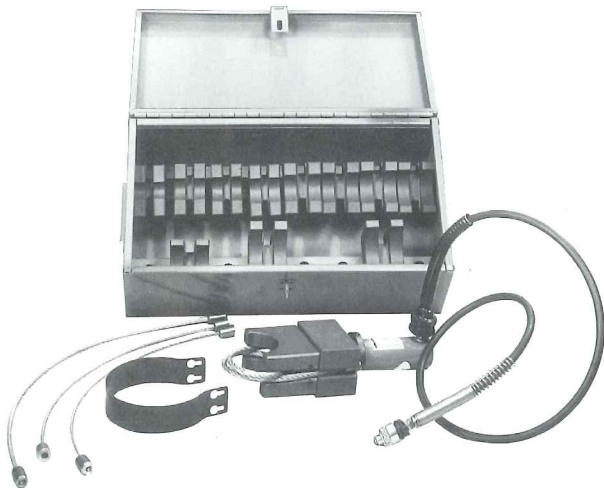


# Crimper Kit for Telephone & Power Eyes



**Note:** Crimper shown with safety guard removed for unobstructed view of application.

**Warning:** Never operate crimper without safety guard in place.



A complete kit for crimping pulling eyes from .555" (14 mm) diameter to 3.620" (92 mm) diameter.

Part Number	Description
08920000	Standard Crimper Kit includes the following dies, cables, crimper and hose.
08920001	Partial Crimper Kit (includes the cylinder assembly, cable guard and carrying case only).

## Dies

Part Number	Size		Pulling Eye Size	
	(in)	(mm)	(in)	(mm)
08920008	3/4"	19	.555-.750	14-19
08920011	1 1/4"	32	.950-1.152	24-29
08920014	1 1/2"	38	1.277-1.402	32-36
08920016	1 3/4"	44	1.527-1.652	39-42
08920017	1 7/8"	48	1.777	45
08920019	2"	51	1.902	49
08920021	2 1/4"	57	2.027-2.152	51-55
08920024	2 1/2"	63	2.277-2.402	58-61
08920026	2 3/4"	70	2.527-2.652	64-68
08920028	3"	76	2.777-2.902	70-74
08920031	3 1/4"	83	2.995-3.140	76-79
08920033	3 1/2"	89	3.245-3.370	83-86
08920036	3 3/4"	95	3.495-3.620	89-92

## Cables

Part Number	Size	Pulling Eye Size	
		(in)	(mm)
08920002	3/16" x 23" (5 mm x 584 mm)	.555-.950	14-24
08920003	1/4" x 23" (6 mm x 584 mm)	1.055-1.777	27-45
08920004	5/16" x 29" (8 mm x 737 mm)	1.902-2.652	49-68
08920005	3/8" x 32 1/2" (10 mm x 826 mm)	2.777-3.495	70-89
08920006	3/8" x 38" (10 mm x 965 mm)	3.620-4.495	92-114

## Crimper

Number	Description
08920051	Cylinder Assembly** w/hose, male quick coupler
08920053	Cable Guard
08920054	Carrying Case

\*U.S. Patent Number 4,070,894. Patented Canada 1978.

\*\*Component parts available.

# Hydraulic Pump



High performance pump to operate pulling eye crimpers.

- Female quick connect coupler
- Foot switch
- Carrying case
- Pressure Gauge

## Mechanical Specifications

- Voltage: 115 VAC or 220 VAC
- Amperage: 15 amp
- Pressure: 10,000 psi (689 bar)
- Flow: 120 cu. in./min @ 0-400 psi (21 lpm @ 0-28 bar)  
10 cu. in./min @ 400-10,000 psi (.16 lpm @ 28-689 bar)

Part Number	Description
08930710	Electric Pump with foot switch and case, 110 VAC
08930340	Electric Pump with foot switch and case, 220 VAC

08930210